

# LUXURY CABINS

## Features & Prices



### FEATURES

Each cabin offers spectacular unobstructed views over the Lockyer Valley, with a covered outdoor private deck to take in the breathtaking scenery. There are three suites in each cabin - you can book them individually or choose to book the whole cabin for your exclusive use. Each cabin contains:

- 3 bedrooms with built in robes
- Spectacular views
- 2 bathrooms
- Fully functioning kitchen
- Private deck with BBQ
- Lounge and dining room

### RATES

Premium Suite: \$297 per couple per night  
 Deluxe Suite: \$266.20 per couple per night  
 Standard Suite: \$145.20 per couple per night  
 Whole Cabin: \$708.40 per night

Bookings can be made via the website or over the phone. A 50% deposit will be required to secure your booking. Minimum 2 night stay Friday and Saturday nights. Sunday to Thursday a one night stay is permitted.

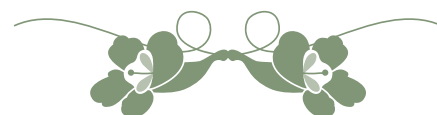
Check In: 2pm | Check Out: 10:30am  
**Pets:** Pets are not permitted at Branell Homestead.

### BOOKINGS

To book accommodation, please click on the 'Book Accommodation' button of this website.

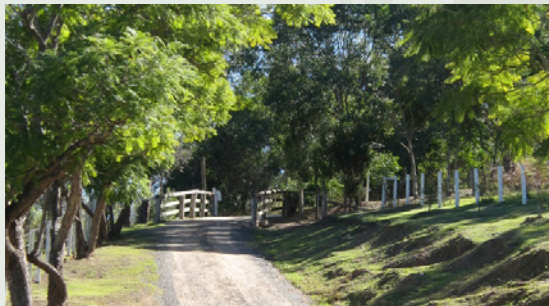


# BRANELL HOMESTEAD

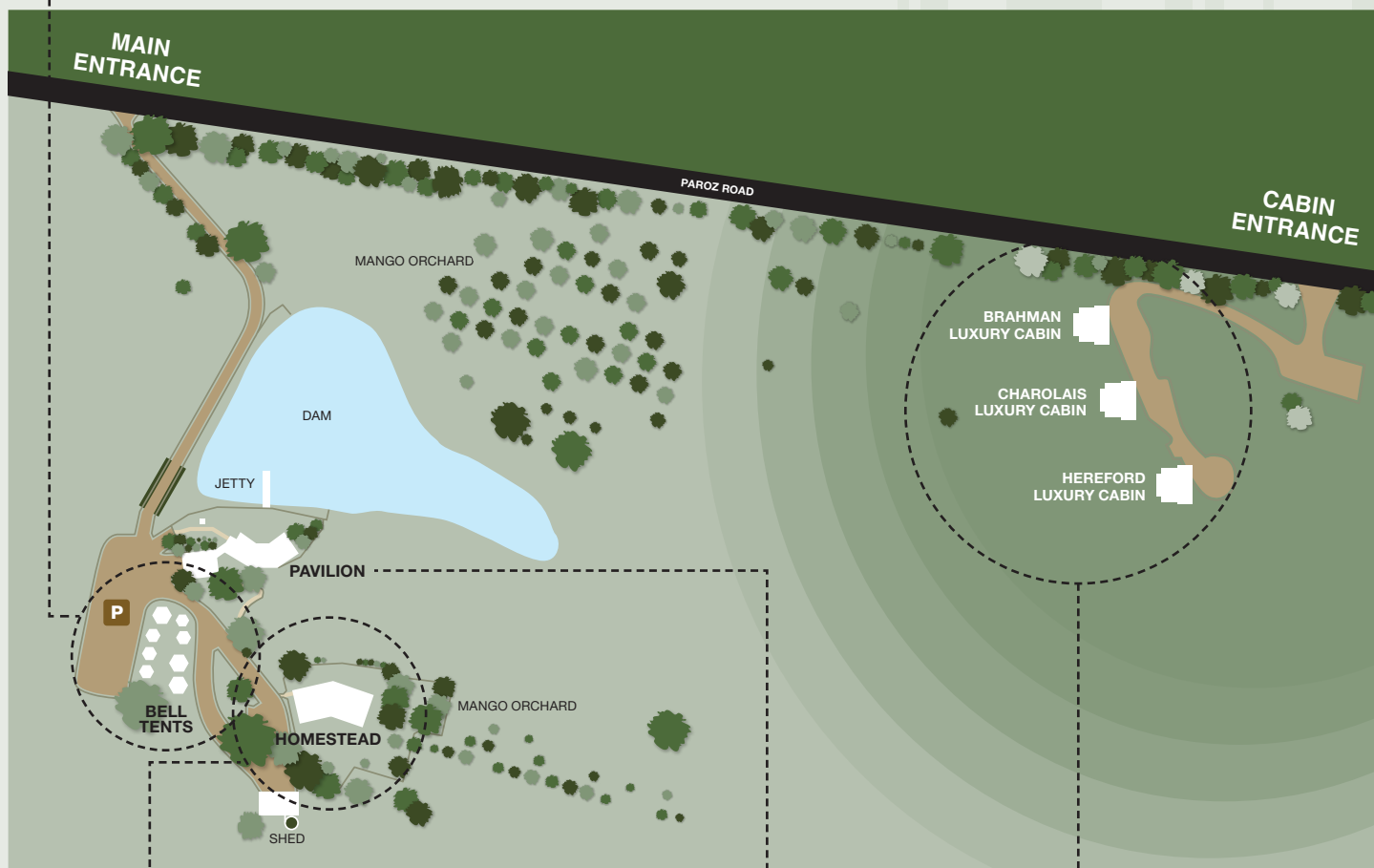




# PROPERTY MAP



TREE-LINED DRIVEWAY: In late spring the jacaranda trees come alive with impressive purple blooms.



**HOMESTEAD:** Federation style elegance

**PAVILION:** Covered open air venue for weddings and events

**LUXURY CABINS:** Modern contemporary design with spectacular views over the Lockyer Valley

**BELL TENTS:** Relaxing accommodation with fire place

## BRANELL HOMESTEAD



12 Paroz Road, Laidley Q Phone: (07) 5465 1788

[www.branell.com.au](http://www.branell.com.au)