



# Charm & Grandeur

*Branell Homestead Bed and Breakfast, located just outside Laidley in the beautiful Lockyer Valley, is perfect for people who wish to experience the finer things of life.*

Find the perfect book in our extensive library, watch a movie on the big screen, have a fish from our private jetty or take a relaxing stroll around our 80 acre property discovering the native flora and fauna. Whatever you choose, you will be enchanted with the charm and grandeur of this federation style homestead and peaceful views.



2009, 2010 & 2011 STAR REGIONAL BUSINESS AWARDS WINNER

**12 Paroz Road, Laidley, Queensland 4341**

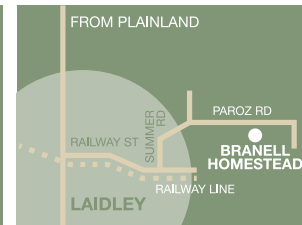
**Phone: (07) 5465 1788**

From Brisbane head west taking the Warrego Highway to Plainland. Just past Plainland take the turnoff to Laidley. From Toowoomba head east taking the Warrego Highway to Plainland. Just before Plainland take the turnoff south to Laidley.

Just before the railway line and Main Street, turn left into Railway Street. Turn left into Summer Road. Turn right into Paroz Road. Branell Homestead is number 12, on the right, approximately 200 meters before the top of the hill.

**If you lose your way, please feel free to call us on 5465 1788.**

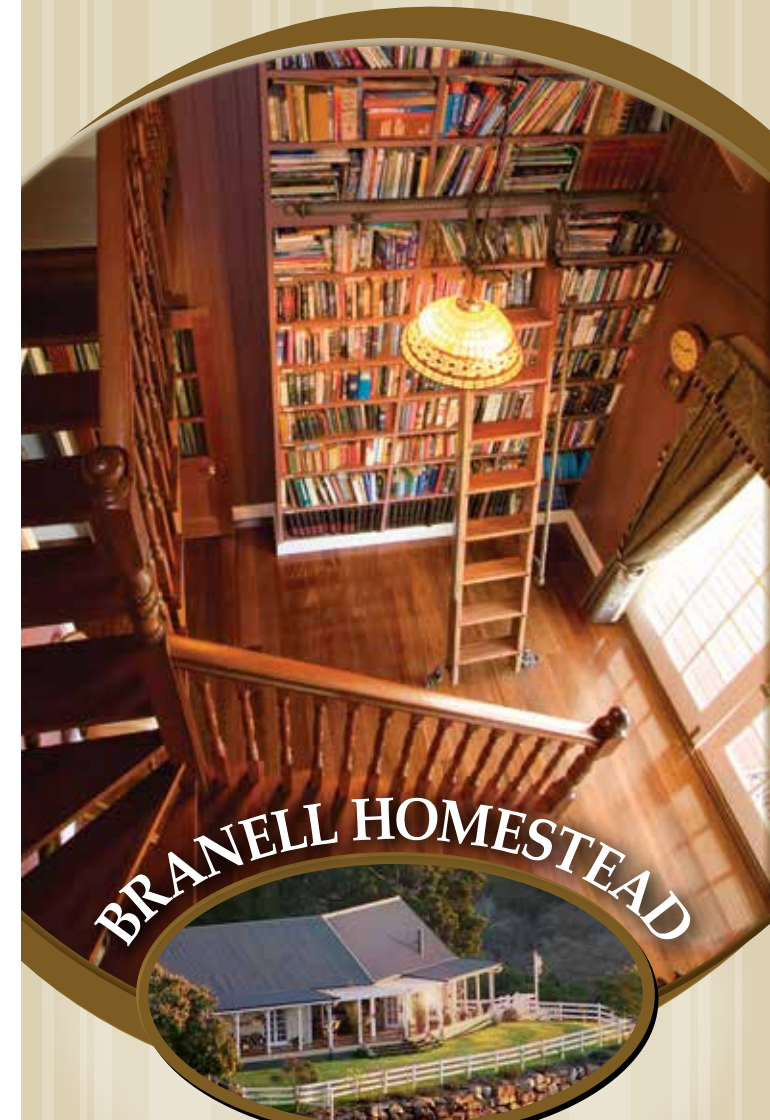
*Contributing Photographers:  
Voice Photography and Jonas Peterson Photography.*



[www.branell.com.au](http://www.branell.com.au)

# Rural Luxury

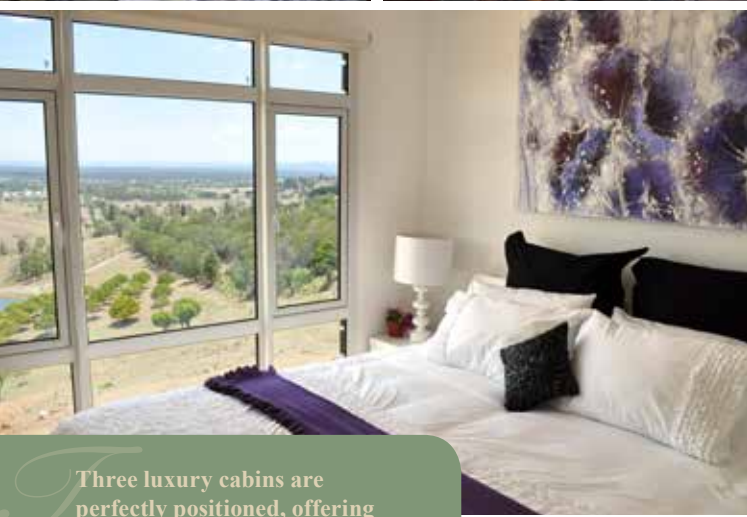
FEDERATION STYLE ELEGANCE



**BRANELL HOMESTEAD**

**BED & BREAKFAST**

[www.branell.com.au](http://www.branell.com.au)

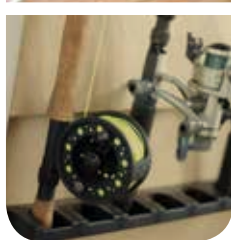


Three luxury cabins are perfectly positioned, offering spectacular views over the Lockyer Valley. Each suite has a covered private deck to take in the breathtaking scenery.



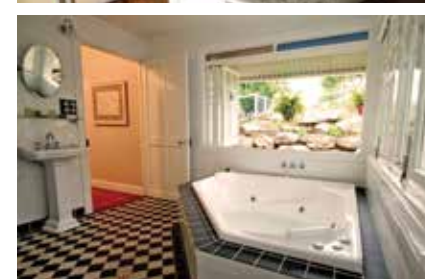
### THREE BEDROOM LUXURY CABINS

- Fresh contemporary design with high quality modern furniture
- Bedrooms all with built in robes and televisions
- 2 bathrooms
- Fully functioning kitchen
- Private deck with BBQ
- Lounge and dining room



### HOMESTEAD: THREE HANDSOMELY APPOINTED GUEST ROOMS

- Just one hour from Brisbane
- Fabulous views
- All guest rooms ensuited
- Antique furnishings
- Large verandahs and spacious deck
- Large mango orchard
- Working cattle property
- Media room with wall-sized screen
- Floor to ceiling library
- Cooked country breakfasts available
- Fishing for native fish
- Fully air conditioned
- Families welcome



*Relax  
Unwind  
Rejuvenate*



Pictureque views, not too far from home. Situated in the stunning Lockyer Valley, Branell Homestead is located within easy reach of all major population centres of South East Queensland.